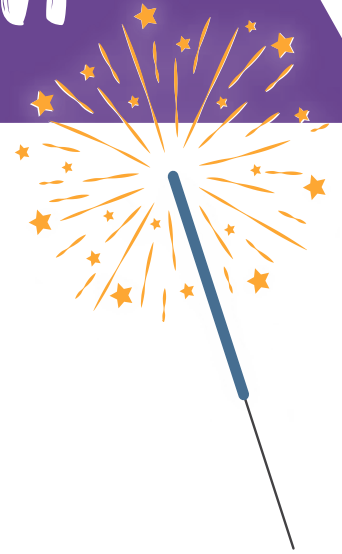


Sparking Inspiration



Lunch Provided
Vendors
& Booths

Playful Pathways Friday, October 24, 2025

9:00 am - 3:00 pm
(Doors open at 8:00 am)

Dover Bay Secondary School
6135 McGirr Road, Nanaimo



Morning Keynote Kathleen Kummen: *Playing for more liveable worlds: The role of the teacher in young children's play*

In the early years, there is a widespread belief that play is an essential part of a good childhood. This idea is so deeply ingrained that it's even recognized as a fundamental right for children by the United Nations. However, amid this widespread acceptance, as teachers, we can forget how play is influenced by societal constructs that reflect and perpetuate cultural norms. The late Vivian Paley reminds us of both the moments of joy and exclusion that play can hold in the classroom. In this presentation, I will discuss the importance of adults' active engagement in play alongside children to foster inclusive learning environments. I consider the question, "What if early childhood education is not merely a job but an art of teaching" (Vincent-Snow & Tong, 2019, p. 8), and integral to that art is a serious, playful engagement with the children they work with?

Limit of 300
participants




Afternoon Keynote Aimee Blow: *In the Space of Possibility*

Teaching in the early years, from birth to age eight, is an invitation into possibility. Through reflection and vulnerability, we open pathways to creativity, curiosity, and joy—for ourselves and for children. In times of change, play and curriculum intertwine, reminding us that education is never static. This keynote will explore what becomes possible when we choose ways of being and narratives that nurture growth, connection, and imagination.

Registration
Closes
October 17

Who is this for?

Early Childhood Educators ★ Primary Teachers ★ ECE & Education Students
Childcare Providers ★ Administrators ★ StrongStart Facilitators

Click here for
full session
descriptions! 

Registration Link: <https://events.sd71.bc.ca/events/early-years-conference/> 

Hosted by Island Early Years Network (School District Early Learning & Child Care Leads and Teachers)